

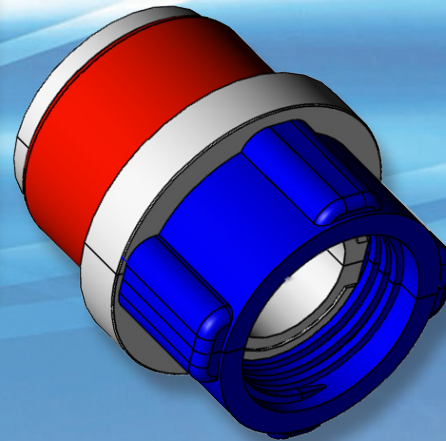
Simplex Wedge Seal™ Cable Termination Plugs



Simplex Wedge Seals™ offer a uniform seal around cables to protect from moisture and debris incursion. We source high quality materials and test our seals in real-world conditions to deliver you a quality product that you can depend on for the long-term. Cal Am's 25 + years of industry experience gives you confidence that our Simplex Wedge Seals™ will provide an optimum seal, with industry-best lead times. All of our Simplex Wedge Seals™ can easily be installed and removed by hand.

For over 25 years Cal Am Manufacturing has been providing the Power and Telecommunications industry with the highest quality fittings and supports. For more information on other fine Cal Am products please visit our website at calammfg.com or contact us with the information below.

- Made of the highest quality materials
- Installs around existing cables
- Available in various cable sealing ranges
- Installs and removes without use of special tools or equipment
- Fast lead-times



1" Simplex Wedge Seal

| SIMPLEX | | | | | | | |
|--------------|------------|-----------------------------|-------------|------|----------------|---------|-----------|
| PART NO. | BUSHING(S) | NOMINAL INNER DIAMETER (IN) | RANGE (IN) | SIZE | CASE SIZE | WEIGHT | CASE QTY. |
| 7110-027-035 | 0 | 1.00"-1.13" | 0.27"-0.35" | 1" | 10½" x 8" x 3" | 3.5 LBS | 20 |
| 7110-035-057 | 2 | 1.00"-1.13" | 0.35"-0.57" | 1" | 10½" x 8" x 3" | 3.5 LBS | 20 |
| 7110-051-071 | 2 | 1.00"-1.13" | 0.51"-0.71" | 1" | 10½" x 8" x 3" | 3.5 LBS | 20 |
| 7111-020-035 | 1 | 1.12"-1.23" | 0.20"-0.35" | 1" | 10½" x 8" x 3" | 3.5 LBS | 20 |
| 7111-035-057 | 2 | 1.12"-1.23" | 0.35"-0.57" | 1" | 10½" x 8" x 3" | 3.5 LBS | 20 |
| 7111-051-071 | 2 | 1.12"-1.23" | 0.51"-0.71" | 1" | 10½" x 8" x 3" | 3.5 LBS | 20 |



Wedge Seal™ Cable Termination Plugs



1.25" Simplex Wedge Seal

| SIMPLEX | | | | | | | |
|--------------|------------|-----------------------------|-------------|-------|----------------|---------|-----------|
| PART NO. | BUSHING(S) | NOMINAL INNER DAIMETER (IN) | RANGE (IN) | SIZE | CASE SIZE | WEIGHT | CASE QTY. |
| 7112-035-057 | 2 | 1.22"-1.36" | 0.35"-0.57" | 1.25" | 10½" x 8" x 3" | 3.5 LBS | 20 |
| 7112-051-071 | 2 | 1.22"-1.36" | 0.51"-0.71" | 1.25" | 10½" x 8" x 3" | 3.5 LBS | 20 |
| 7112-071-084 | 1 | 1.22"-1.36" | 0.71"-0.84" | 1.25" | 10½" x 8" x 3" | 3.5 LBS | 20 |

1.375" Simplex Wedge Seal

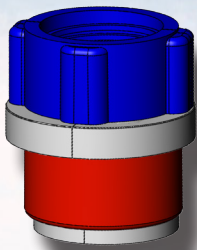
| SIMPLEX | | | | | | | |
|--------------|------------|-----------------------------|---------------|--------|----------------|---------|-----------|
| PART NO. | BUSHING(S) | NOMINAL INNER DAIMETER (IN) | RANGE (IN) | SIZE | CASE SIZE | WEIGHT | CASE QTY. |
| 7113-012-043 | 2 | 1.37" - 1.50" | 1.37" - 1.50" | 1.375" | 10½" x 8" x 3" | 3.5 LBS | 20 |
| 7112-035-057 | 2 | 1.37" - 1.50" | 1.37" - 1.50" | 1.375" | 10½" x 8" x 3" | 3.5 LBS | 20 |
| 7112-051-071 | 2 | 1.37" - 1.50" | 1.37" - 1.50" | 1.375" | 10½" x 8" x 3" | 3.5 LBS | 20 |

1.5" Simplex Wedge Seal

| SIMPLEX | | | | | | | |
|--------------|------------|-----------------------------|---------------|------|-----------------|--------|-----------|
| PART NO. | BUSHING(S) | NOMINAL INNER DAIMETER (IN) | RANGE (IN) | SIZE | CASE SIZE | WEIGHT | CASE QTY. |
| 7115-008-035 | 2 | 1.37" - 1.50" | 1.37" - 1.50" | 1.5" | 11½" x 8⅝" x 3" | 5 LBS | 20 |
| 7115-035-057 | 2 | 1.37" - 1.50" | 1.37" - 1.50" | 1.5" | 11½" x 8⅝" x 3" | 5 LBS | 20 |
| 7115-051-071 | 2 | 1.37" - 1.50" | 1.37" - 1.50" | 1.5" | 11½" x 8⅝" x 3" | 5 LBS | 20 |
| 7116-051-071 | 2 | 1.56" - 1.73" | 0.51"-0.71" | 1.5" | 11½" x 8⅝" x 3" | 5 LBS | 20 |
| 7116-071-090 | 2 | 1.56" - 1.73" | 0.71"-0.90" | 1.5" | 11½" x 8⅝" x 3" | 5 LBS | 20 |

2" Simplex Wedge Seal

| SIMPLEX | | | | | | | |
|--------------|------------|-----------------------------|-------------|------|---------------|--------|-----------|
| PART NO. | BUSHING(S) | NOMINAL INNER DAIMETER (IN) | RANGE (IN) | SIZE | CASE SIZE | WEIGHT | CASE QTY. |
| 7120-008-014 | 0 | 1.87"-2.06" | 0.08"-0.14" | 2" | 13" x 9½"x 3" | 5 LBS | 20 |
| 7120-015-024 | 1 | 1.87"-2.06" | 0.15"-0.24" | 2" | 13" x 9½"x 3" | 6 LBS | 20 |
| 7120-025-051 | 3 | 1.87"-2.06" | 0.25"-0.51" | 2" | 13" x 9½"x 3" | 6 LBS | 20 |
| 7120-052-075 | 3 | 1.87"-2.06" | 0.52"-0.75" | 2" | 13" x 9½"x 3" | 6 LBS | 20 |
| 7120-076-100 | 3 | 1.87"-2.06" | 0.76"-1.00" | 2" | 13" x 9½"x 3" | 6 LBS | 20 |



CALAM
MANUFACTURING

Underground Electrical & Broadband Fittings

