

Schedule 40 PVC Caps & Riser Caps

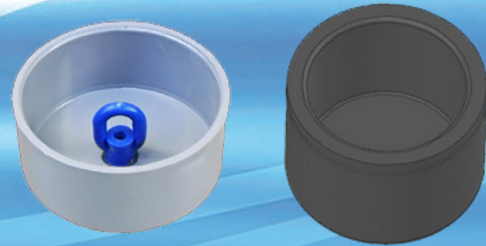


Our large line of schedule 40 caps are available in sizes ranging from ½ to 6 inches and are manufactured in accordance to application requirements listed in NEC Article 347 and 370 UL514, Mil-C-23571, Federal Specification WC 1094, ASTM F513-89, and NEMA Standards.

All of our caps are produced from the finest grades of high-impact Polyvinyl Chloride using state-of-the-art manufacturing techniques. You will find that these products offer excellent lot-to-lot consistency, smooth tapered walls for easier installation and a durable, warp-resistant design all at an affordable price.

For over 25 years Cal Am has been providing the Power and Telecommunications industry with the highest quality conduit fittings and supports. For more information on other fine Cal Am products please call or visit our website at calammfg.com.

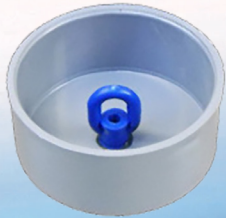
- **For use in Exposed & Underground Applications**
- **11 Sizes to Choose From**
- **Installs in Seconds**
- **Warp Resistant, Durable Design**



Schedule 40 PVC Caps & Riser Caps

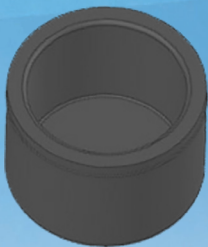


Riser Cap, Sch. 40



PART #	SIZE	UNIT	CASE QTY	CASE DIMENSIONS	CASE WEIGHT
2042-015	1-1/2"	CS	100	14" x 10" x 6"	10
2042-020	2"	CS	100	12" x 10" x 10"	16
2042-025	2-1/2"	CS	60	16" x 12" x 8"	18
2042-030	3"	CS	60	16" x 12" x 12"	27
2042-040	4"	CS	30	16" x 12" x 12"	18
2042-050	5"	CS	15	16" x 12" x 12"	19
2042-060	6"	CS	10	16" x 12" x 12"	15

Standard Cap, Sch. 40



PART #	SIZE	UNIT	CASE QTY	CASE DIMENSIONS	CASE WEIGHT
2046-005	1/2"	CS	100	10" x 8" x 4"	3
2046-007	3/4"	CS	100	10" x 8" x 4"	4
2046-010	1"	CS	100	12" x 8" x 4"	6
2046-012	1-1/4"	CS	100	12" x 8" x 6"	9
2046-015	1-1/2"	CS	100	14" x 10" x 10"	11
2046-020	2"	CS	100	12" x 10" x 10"	13
2046-025	2-1/2"	CS	60	16" x 12" x 8"	17
2046-030	3"	CS	60	16" x 12" x 12"	26
2046-040	4"	CS	30	16" x 12" x 12"	20
2046-050	5"	CS	15	16" x 12" x 12"	18
2046-060	6"	CS	10	16" x 12" x 12"	15

