

# Schedule 40 PVC Swedged Reducers & Reducer Bushings



Our large selection of molded swedged reducers and reducer bushings are available for conduit ranging in sizes from  $\frac{3}{4}$  to 4 inches and are manufactured in accordance to application requirements in NEX Article 347 and 370 UL 514, Mil-C-23571, Federal Specifications WC 1094, ASTM F513-89 and NEMA Standards.

All of our bell reducers and reducer bushings are produced from high-impact Polyvinyl Chloride using state-of-the-art manufacturing techniques. Use Cal Am's reducer bushings to connect different sizes of conduit when space is an issue and our standard bell reducers for general applications. Our reducers are available as Male Spigot x Male Spigot, IPS Socket x IPS Socket and IPS Socket to Male Spigot Combo; whatever your reducing needs, chances are Cal Am has the right fitting for you.

As with all Cal Am fittings, you will find that these reducers offer superior lot-to-lot consistency, a smooth interior wall for easy installation and a durable, warp resistant design that you can rely upon in the field time and time again.

For over 25 years Cal Am has been providing the Power and Telecommunications industry with the highest quality conduit fittings and supports. For more information on other fine Cal Am products please call or visit our website at [calammfg.com](http://calammfg.com).

## • For Use in Exposed & Underground

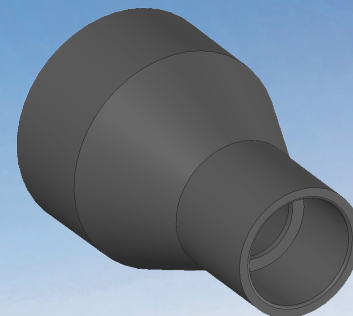
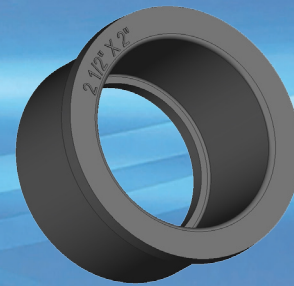
### Applications

## • 20 Sizes

## • Resists Extreme Temperature

### Fluctuations

## • Installs in Seconds

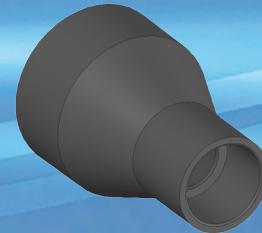
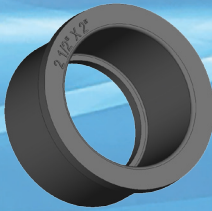


# Schedule 40 PVC Swedged Reducers & Reducer Bushings



## Swedged Reducers, Sch. 40 Conduit

PART #	SIZE	DESCRIPTION	UNIT	CASE QTY	CASE DIMMENSIONS	CASE WEIGHT (LBS)
3246-151	1-1/2" x 1"	Male Spigot x Male Spigot	CS	25	10" x 8" x 4"	4
3246-201	2" x 1"	Male Spigot x Male Spigot	CS	25	12" x 8" x 6"	5
3246-202	2" x 1-1/4"	Male Spigot x Male Spigot	CS	25	12" x 8" x 6"	5
3246-215	2" x 1-1/2"	Male Spigot x Male Spigot	CS	25	12" x 8" x 6"	6
3247-2010S	2"S x 1"S	Socket x Socket/Male Spigot Combo	CS	25	12" x 8" x 6"	6
3247-207S1M	2"S x 3/4"S	IPS Socket x IPS Socket	CS	25	12" x 8" x 6"	6
3247-2515S	2 1/2"S x 1 1/2"S	IPS Socket x IPS Socket	CS	25	14" x 10" x 6"	9
3247-2520S	2 1/2"S x 2"S	IPS Socket x IPS Socket	CS	25	14" x 10" x 6"	10
3247-3020S	3"S x 2"S	IPS Socket x IPS Socket	CS	25	12" x 10" x 10"	15
3247-3025S	3"S x 2 1/2"S	IPS Socket x IPS Socket	CS	25	16" x 12" x 8"	15
3247-4020S	4"S x 2"S	IPS Socket x IPS Socket	CS	25	16" x 12" x 12"	16



## Reducer Bushings, Sch. 40 Conduit

PART #	SIZE	UNIT	CASE QTY	CASE DIMENSIONS	CASE WEIGHT (LBS)
2048-105	3/4" x 1/2"	CS	100	10" X 8" X 4"	2
2048-107	1" x 3/4"	CS	100	10" X 8" X 4"	4
2048-121	1-1/4" x 1"	CS	50	10" X 8" X 4"	4
2048-127	1-1/4" x 3/4"	CS	50	12" X 8" X 4"	5
2048-151	1-1/2" x 1"	CS	40	12" X 8" X 4"	5
2048-152	1-1/2" x 1-1/4"	CS	40	12" X 8" X 4"	5
2048-215	2" x 1-1/2"	CS	25	12" X 8" X 4"	4
2048-252	1-1/2" x 2"	CS	15	12" X 8" X 4"	3
2048-320	3" x 2"	CS	25	14" X 10" X 6"	9

