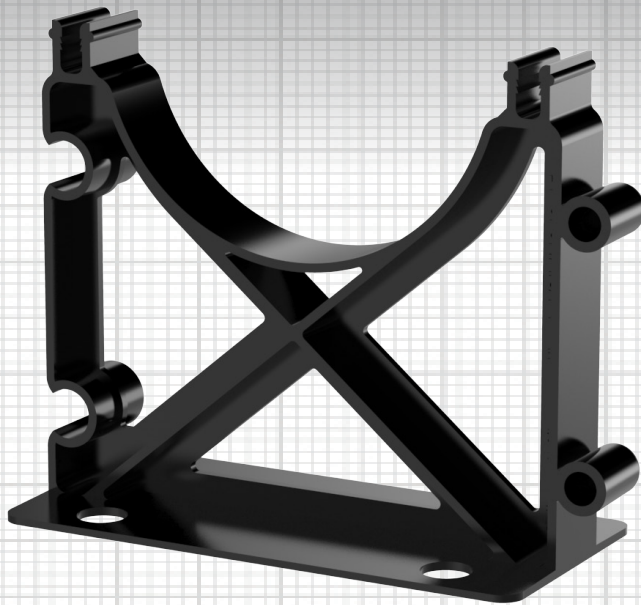
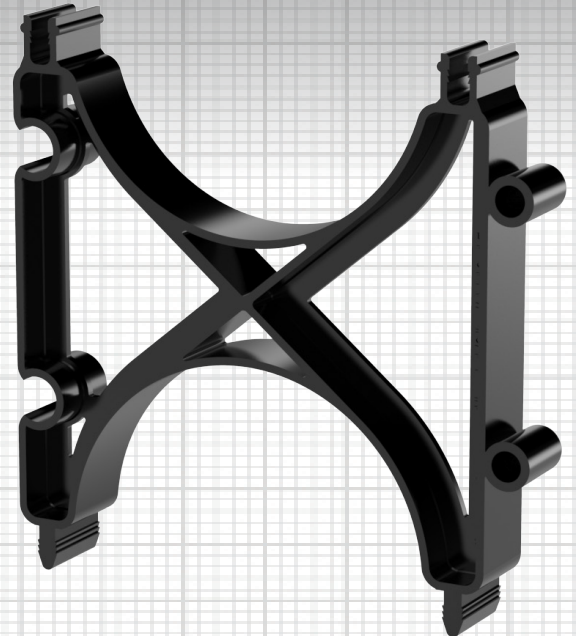


KEY FEATURES

- Bases and intermediates are available in eighteen (18) sizes
- Vertical and horizontal interlocking for fast secure field assembly
- Constructed of high impact polymers
- No banding required
- Used in both encased burial and direct burial installations
- Pre-assembly available



Base Duct Spacer



Intermediate Duct Spacer

The best in durability for underground conduit support

Cal Am Manufacturing® Duct Spacers have been the choice for contractors for decades. Utilizing a proven two-piece design specifically engineered to support duct arrays within trenching prior to encasement. These sturdy, versatile spacers will not shift under the weight of your workmen and stay firmly in place during fill.

Available in eighteen (18) sizes, Cal Am Duct Spacers accommodate ducts ranging in size from 2" (50mm) to 8" (200mm) while providing duct separation of 1.50" (40mm) to 3" (80mm).

Molded from the finest grades of high impact polymers using state-of-the-art manufacturing techniques, these products are highly resistant to extreme temperature fluctuations and U.V. light, are virtually indestructible, and offer the consistent lot-to-lot conformity that is a must when accurate duct separation is required.

Available in pre-assembled configurations. Please contact us for more information.



SPECIFICATIONS

| PRODUCT NUMBER | EACH SIZE (IN) | EACH SIZE (MM) | CASE QTY | UOM | CASE DIMENSIONS (IN) | CASE DIMENSIONS (CM) | COLOR |
|--------------------------|----------------|----------------|----------|-----|----------------------|-----------------------|-------|
| BASE DUCT SPACERS | | | | | | | |
| 4020-15 | 2.00" X 1.50" | 50.80 X 38.10 | 450 | CS | 23" x 23" x 19" | 58.42 x 58.42 x 48.26 | Black |
| 4020-20 | 2.00" X 2.00" | 50.80 X 50.80 | 325 | CS | 23" x 23" x 19" | 58.42 x 58.42 x 48.26 | Black |
| 4020-30 | 2.00" X 3.00" | 50.80 X 76.20 | 300 | CS | 23" x 23" x 19" | 58.42 x 58.42 x 48.26 | Black |
| 4030-15 | 3.00" X 1.50" | 76.20 X 38.10 | 250 | CS | 23" x 23" x 19" | 58.42 x 58.42 x 48.26 | Black |
| 4030-20 | 3.00" X 2.00" | 76.20 X 50.80 | 225 | CS | 23" x 23" x 19" | 58.42 x 58.42 x 48.26 | Black |
| 4030-30 | 3.00" X 3.00" | 76.20 X 76.20 | 190 | CS | 23" x 23" x 19" | 58.42 x 58.42 x 48.26 | Black |
| 4040-10 | 4.00" X 1.00" | 101.60 X 25.40 | 250 | CS | 23" x 23" x 19" | 58.42 x 58.42 x 48.26 | Black |
| 4040-15 | 4.00" X 1.50" | 101.60 X 38.10 | 180 | CS | 23" x 23" x 19" | 58.42 x 58.42 x 48.26 | Black |
| 4040-20 | 4.00" X 2.00" | 101.60 X 50.80 | 180 | CS | 23" x 23" x 19" | 58.42 x 58.42 x 48.26 | Black |
| 4040-30 | 4.00" X 3.00" | 101.60 X 76.20 | 150 | CS | 23" x 23" x 19" | 58.42 x 58.42 x 48.26 | Black |
| 4050-15 | 5.00" X 1.50" | 127.00 X 38.10 | 140 | CS | 23" x 23" x 19" | 58.42 x 58.42 x 48.26 | Black |
| 4050-20 | 5.00" X 2.00" | 127.00 X 50.80 | 100 | CS | 23" x 23" x 19" | 58.42 x 58.42 x 48.26 | Black |
| 4050-30 | 5.00" X 3.00" | 127.00 X 76.20 | 90 | CS | 23" x 23" x 19" | 58.42 x 58.42 x 48.26 | Black |
| 4060-15 | 6.00" X 1.50" | 152.40 X 38.10 | 100 | CS | 23" x 23" x 19" | 58.42 x 58.42 x 48.26 | Black |
| 4060-20 | 6.00" X 2.00" | 152.40 X 50.80 | 100 | CS | 23" x 23" x 19" | 58.42 x 58.42 x 48.26 | Black |
| 4060-30 | 6.00" X 3.00" | 152.40 X 76.20 | 90 | CS | 23" x 23" x 19" | 58.42 x 58.42 x 48.26 | Black |
| 4080-20 | 8.00" X 2.00" | 203.20 X 50.80 | 65 | CS | 23" x 23" x 19" | 58.42 x 58.42 x 48.26 | Black |
| 4080-30 | 8.00" X 3.00" | 203.20 X 76.20 | 60 | CS | 23" x 23" x 19" | 58.42 x 58.42 x 48.26 | Black |

Visit CalAm.net

<https://calam.net/electrical-broadband/duct-spacers/>



SPECIFICATIONS

| PRODUCT NUMBER | EA SIZE (IN) | EA SIZE (MM) | CASE QTY | UOM | CASE DIMENSIONS (IN) | CASE DIMENSIONS (CM) | COLOR |
|----------------------------------|---------------|----------------|----------|-----|----------------------|-----------------------|-------|
| INTERMEDIATE DUCT SPACERS | | | | | | | |
| 4120-15 | 2.00" X 1.50" | 50.80 X 38.10 | 500 | CS | 23" x 23" x 19" | 58.42 x 58.42 x 48.26 | Black |
| 4120-20 | 2.00" X 2.00" | 50.80 X 50.80 | 325 | CS | 23" x 23" x 19" | 58.42 x 58.42 x 48.26 | Black |
| 4120-30 | 2.00" X 3.00" | 50.80 X 76.20 | 275 | CS | 23" x 23" x 19" | 58.42 x 58.42 x 48.26 | Black |
| 4130-15 | 3.00" X 1.50" | 76.20 X 38.10 | 250 | CS | 23" x 23" x 19" | 58.42 x 58.42 x 48.26 | Black |
| 4130-20 | 3.00" X 2.00" | 76.20 X 50.80 | 225 | CS | 23" x 23" x 19" | 58.42 x 58.42 x 48.26 | Black |
| 4130-30 | 3.00" X 3.00" | 76.20 X 76.20 | 160 | CS | 23" x 23" x 19" | 58.42 x 58.42 x 48.26 | Black |
| 4140-10 | 4.00" X 1.00" | 101.60 X 25.40 | 250 | CS | 23" x 23" x 19" | 58.42 x 58.42 x 48.26 | Black |
| 4140-15 | 4.00" X 1.50" | 101.60 X 38.10 | 180 | CS | 23" x 23" x 19" | 58.42 x 58.42 x 48.26 | Black |
| 4140-20 | 4.00" X 2.00" | 101.60 X 50.80 | 160 | CS | 23" x 23" x 19" | 58.42 x 58.42 x 48.26 | Black |
| 4140-30 | 4.00" X 3.00" | 101.60 X 76.20 | 125 | CS | 23" x 23" x 19" | 58.42 x 58.42 x 48.26 | Black |
| 4150-15 | 5.00" X 1.50" | 127.00 X 38.10 | 140 | CS | 23" x 23" x 19" | 58.42 x 58.42 x 48.26 | Black |
| 4150-20 | 5.00" X 2.00" | 127.00 X 50.80 | 100 | CS | 23" x 23" x 19" | 58.42 x 58.42 x 48.26 | Black |
| 4150-30 | 5.00" X 3.00" | 127.00 X 76.20 | 90 | CS | 23" x 23" x 19" | 58.42 x 58.42 x 48.26 | Black |
| 4160-15 | 6.00" X 1.50" | 152.40 X 38.10 | 100 | CS | 23" x 23" x 19" | 58.42 x 58.42 x 48.26 | Black |
| 4160-20 | 6.00" X 2.00" | 152.40 X 50.80 | 100 | CS | 23" x 23" x 19" | 58.42 x 58.42 x 48.26 | Black |
| 4160-30 | 6.00" X 3.00" | 152.40 X 76.20 | 75 | CS | 23" x 23" x 19" | 58.42 x 58.42 x 48.26 | Black |
| 4180-20 | 8.00" X 2.00" | 203.20 X 50.80 | 70 | CS | 23" x 23" x 19" | 58.42 x 58.42 x 48.26 | Black |
| 4180-30 | 8.00" X 3.00" | 203.20 X 76.20 | 45 | CS | 23" x 23" x 19" | 58.42 x 58.42 x 48.26 | Black |

For more technical information and/or to download the Tech Sheet for these products, please visit the Product Webpage: <https://calam.net/electrical-broadband/duct-spacers/>

Visit CalAm.net
<https://calam.net/electrical-broadband/duct-spacers/>



CLIP SPACERS

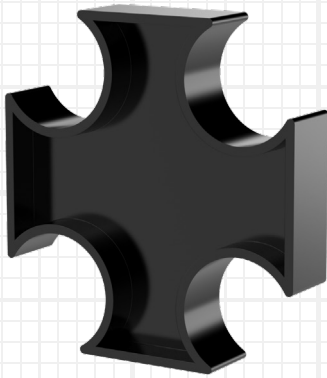
For organizing HDPE or PVC conduit

Easy, snap in conduit clip spacers for use in exposed and underground conduit projects

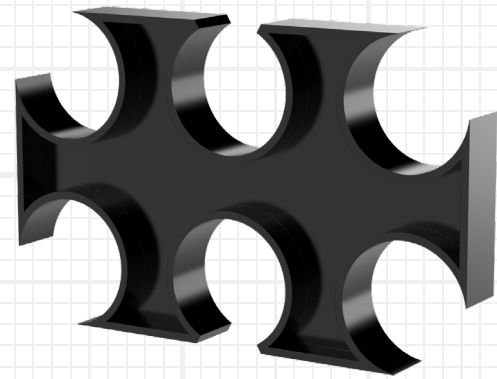
Ideal for organizing HDPE or PVC conduit prior to entrenchment. Easily snap conduit firmly into place, whether directly off the reel or to fixed length conduit, prior to entrenchment.

Made of durable ABS resin and available in both 4-way and 6-way configurations, these spacers accommodate conduit ranging in size from 1" (25mm) to 2" (50mm).

| PRODUCT NUMBER | CONFIGURATION | EACH SIZE (IN) | EACH SIZE (MM) | CASE QTY | UOM | CASE DIMENSIONS (IN) | CASE DIMENSIONS (CM) | COLOR |
|----------------|---------------|----------------|----------------|----------|-----|----------------------|-----------------------|-------|
| A4W-10 | 4-Way | 1.00" | 25 | 400 | CS | 19" x 13" x 13" | 48.26 x 33.02 x 33.02 | Black |
| A4W-12 | 4-Way | 1.25" | 32 | 240 | CS | 19" x 13" x 13" | 48.26 x 33.02 x 33.02 | Black |
| A4W-15 | 4-Way | 1.50" | 40 | 200 | CS | 19" x 13" x 13" | 48.26 x 33.02 x 33.02 | Black |
| A4W-20 | 4-Way | 2.00" | 50 | 250 | CS | 21" x 17" x 17" | 53.34 x 43.18 x 43.18 | Black |
| A6W-12 | 6-Way | 1.25" | 32 | 140 | CS | 19" x 13" x 13" | 48.26 x 33.02 x 33.02 | Black |
| A6W-15 | 6-Way | 1.50" | 40 | 225 | CS | 21" x 17" x 17" | 53.34 x 43.18 x 43.18 | Black |



4-Way



6-Way

For more technical information and/or to download the Tech Sheet for these products, please visit the Product Webpage: <https://calam.net/electrical-broadband/clip-spacers/>

ABOUT CAL AM MANUFACTURING

Cal Am Manufacturing® specializes in products for use in underground electrical and broadband applications. Founded in Southern California over 35 years ago, Cal Am designs and produces fittings and sealing devices to serve utilities, municipalities, government facilities, data centers, and fiber optic projects, through a worldwide network of distributors.

TEST OUR PRODUCT

Learn more at: <https://calam.net/test-our-products>

Corporate Office:
El Cajon, CA 92020

Phone +1.619.336.9550
Fax +1.619.336.9549

sales@calam.net
marketing@calam.net
accounting@calam.net

www.CalAm.net