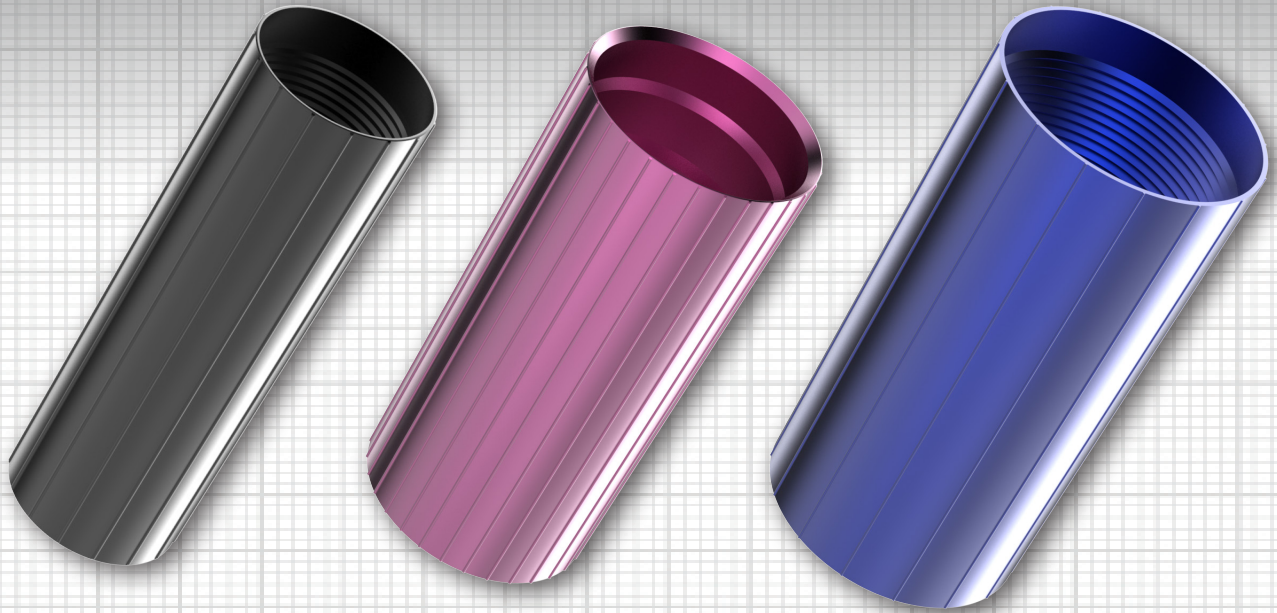


KEY FEATURES

- Anodized finish creates a protective oxide layer on the surface of the aluminum, making it corrosion-resistant and highly durable
- Color-coded for simple size identification
- Compatible with all types of polyethylene conduit for versatility on the jobsite
- Two variations are available: reverse threaded or barbed to accommodate different methods of connections



JackMoon[®]

The original color-coded JackMoon Aluminum Duct Couplers

The classic design of the JackMoon[®] product that you have come to know and trust. The Aluminum Duct Couplers are available in two styles—reverse-threaded and barbed—offering different methods to join conduit to get the perfect fit. With these couplers, you can be confident in the reliability and durability of your connections. With their color-coded anodized coating and ribbed external surface, these couplers are easy to identify and install while providing an excellent grip. They can be used in various telecommunication applications where HDPE conduit is utilized, including datacenters, tower infrastructure, and rural broadband.

The best-selling reverse-threaded couplers are tapered to accommodate a wide range of sizes standard in the telecom industry. In addition, this type of coupler is also designed with razor-sharp threading for easy installation by hand – no tools are required. The barbed couplers feature press-on installation, which requires a hydraulic coupling press.

Visit [CalAm.net](https://calam.net)
<https://calam.net/electrical-broadband/aluminum-duct-couplers/>

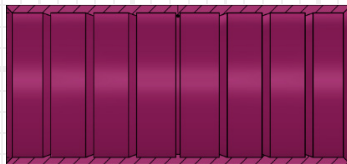
SPECIFICATIONS

PRODUCT NUMBER	EACH SIZE (IN)	EACH SIZE (mm)	CASE QUANTITY	COUPLER TYPE	COLOR
JM-COU-07CP108U	0.75	20	25	REVERSED-THREADED	BLACK
JM-COU-10CP142U	1.00	25	25	REVERSED-THREADED	ALUMINUM
JM-COU-11CP157U	1.125	29	25	REVERSED-THREADED	GREEN
JM-COU-12CP166SB	1.25	32	25	BARBED	BURGUNDY
JM-COU-12CP170U	1.25	32	25	REVERSED-THREADED	BURGUNDY
JM-COU-15CP190SB	1.50	40	25	BARBED	BLUE
JM-COU-15CP200U	1.50	40	25	REVERSED-THREADED	NAVY BLUE
JM-COU-20CP252U	2.00	50	25	REVERSED-THREADED	BRONZE

PRODUCT NUMBER	DUCT RANGE (IN)	DUCT RANGE (mm)
JM-COU-07CP108U	0.91 - 1.08	23.1 - 27.4
JM-COU-10CP142U	1.18 - 1.42	30.0 - 36.0
JM-COU-11CP157U	1.40 - 1.57	35.6 - 39.9
JM-COU-12CP166SB	1.66	42.2
JM-COU-12CP170U	1.48 - 1.70	37.6 - 43.2
JM-COU-15CP190SB	1.90	48.3
JM-COU-15CP200U	1.80 - 2.00	45.7 - 50.8
JM-COU-20CP252U	2.31 - 2.51	58.7 - 63.8

INTERIOR VIEW OF:

BARBED



REVERSED-THREADED



For more technical information and/or to download the Tech Sheet for these products, please visit the Product Webpage: <https://calam.net/electrical-broadband/aluminum-duct-couplers/>

ABOUT CAL AM MANUFACTURING

Cal Am Manufacturing® specializes in products for use in underground electrical and broadband applications. Founded in Southern California over thirty-five years ago, Cal Am designs and produces fittings and sealing devices to serve utilities, municipalities, government facilities, data centers, and fiber optic projects, through a worldwide network of distributors.

TEST OUR PRODUCT

Learn more at: <https://calam.net/test-our-products>

Corporate Office:
El Cajon, CA 92020

Phone +1.619.336.9550
Fax +1.619.336.9549

sales@calam.net
marketing@calam.net
accounting@calam.net

www.CalAm.net