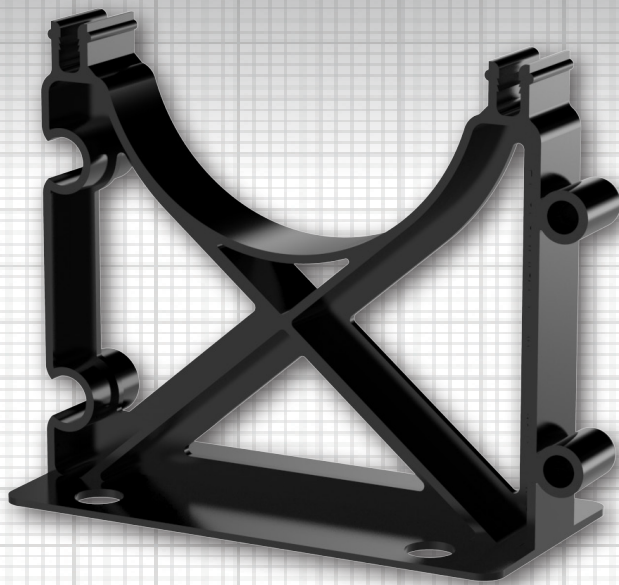
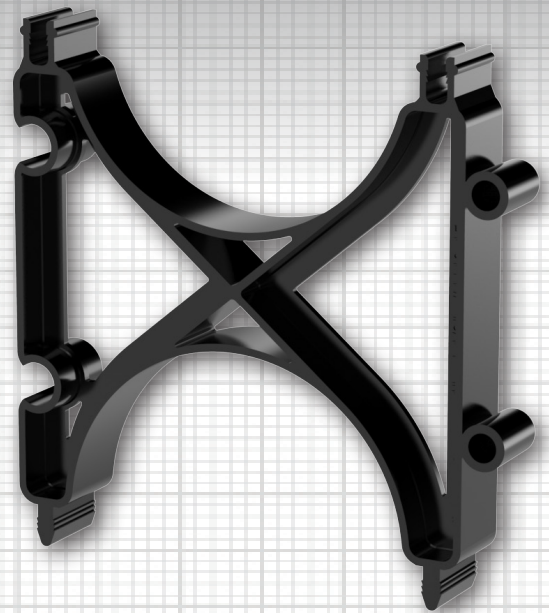


KEY FEATURES

- Vertical and horizontal interlocking for fast and secure in-field assembly
- High impact polymers make our spacers highly durable and can easily support heavy loads
- Used in both encased burial and direct burial installations for versatility



Base Duct Spacer



Intermediate Duct Spacer

Vertical and horizontal interlocking duct spacers for fast secure field assembly

Cal Am Duct Spacers have been the choice for contractors for decades. They utilize a proven two-piece design precisely engineered to support duct arrays within trenching before encasement. These sturdy, versatile spacers will not shift under the weight of your workmen and stay firmly in place during fill.

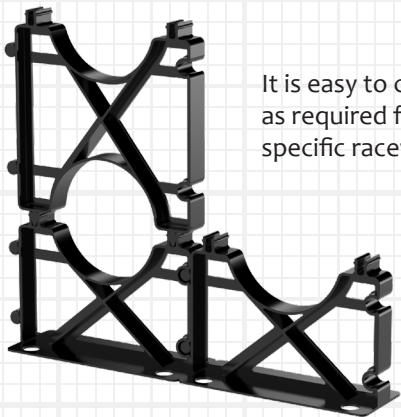
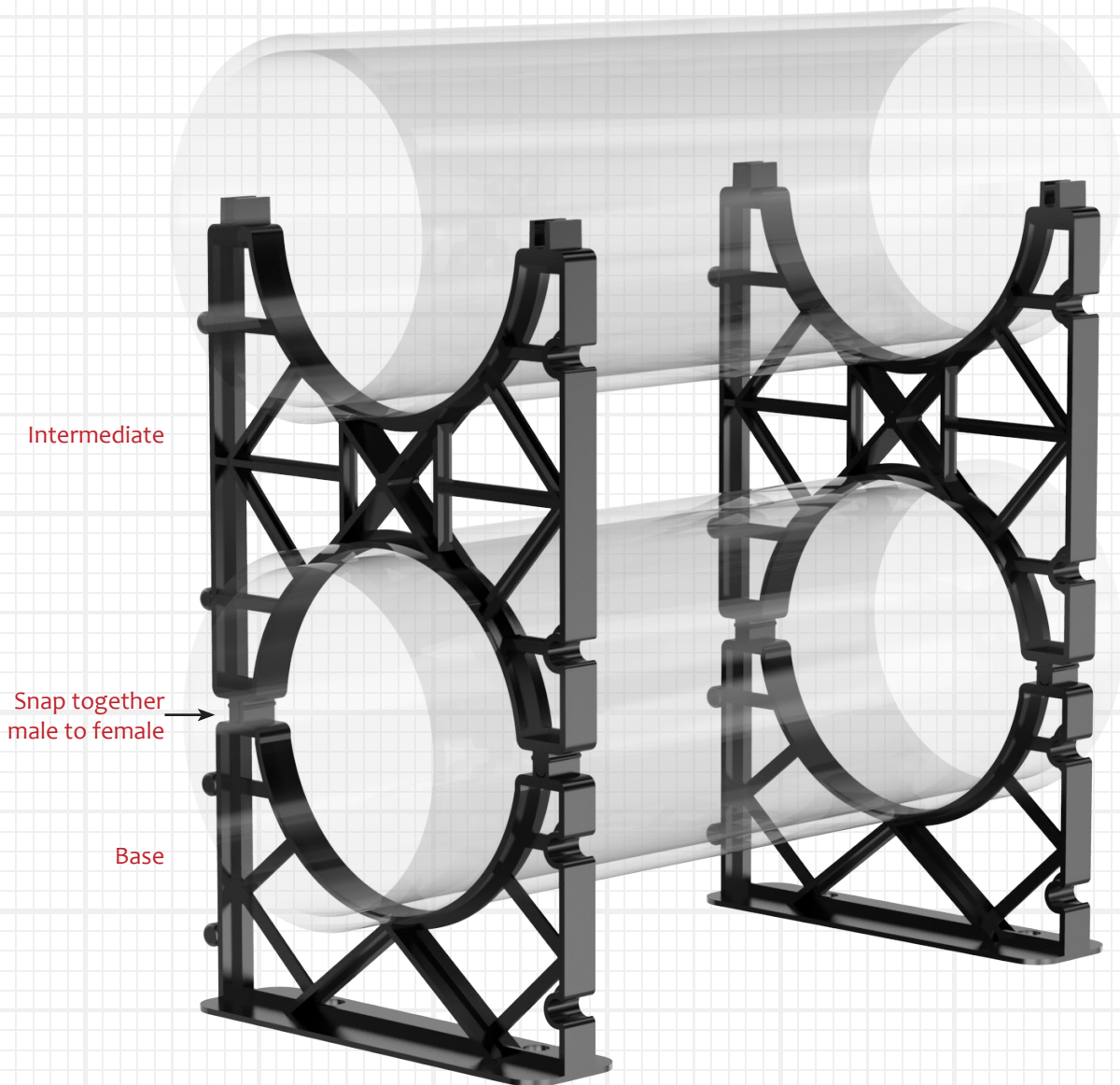
Available in eighteen (18) sizes, Cal Am Duct Spacers accommodate ducts ranging in size from 50mm - 200mm while providing duct separation of 40mm - 80mm. Offering an extensive range of sizing means Cal Am spacers can be tailor-fit to any project—big or small.

Overall, Cal Am Duct Spacers are a reliable and cost-effective solution for any duct placement project. The ease of assembly and resistance to soil conditions and extreme temperatures make Cal Am Duct Spacers a trusted choice for contractors. Their lightweight design makes them easy to handle and transport. In addition, the spacers are environmentally friendly, made from recycled materials, and recyclable. With Cal Am Duct Spacers, contractors can save installation time and reduce costs while ensuring the accurate separation of ducts.

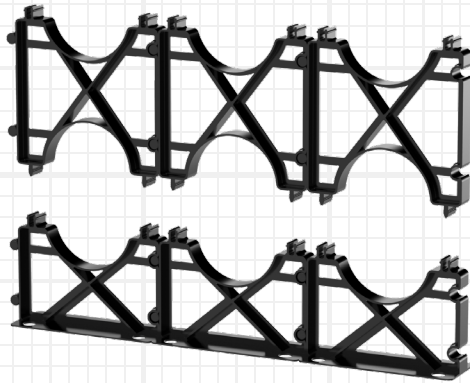
Available in pre-assembled configurations. Please contact us for more information.

Visit [CalAm.net](https://calam.net)
<https://calam.net/electrical-broadband/duct-spacers/>

HOW TO USE



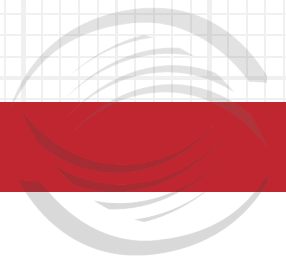
It is easy to custom build as required for your specific raceway.



Pre-assembled intermediate and bases are available.

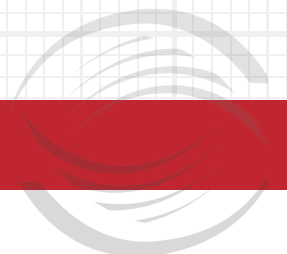
Email sales@calam.net for a quote today.

Visit [CalAm.net](https://calam.net)
<https://calam.net/electrical-broadband/duct-spacers/>



SPECIFICATIONS

PRODUCT NUMBER	EACH SIZE (mm)	CASE QUANTITY	UNIT OF MEASURE	CASE DIMENSIONS (cm)	COLOR
BASE SPACERS					
4020-15	50.80 x 38.10	450	CASE	58.4 x 58.4 x 48.3	BLACK
4020-20	50.80 x 50.80	325	CASE	58.4 x 58.4 x 48.3	BLACK
4020-30	50.80 x 76.20	300	CASE	58.4 x 58.4 x 48.3	BLACK
4030-15	76.20 x 38.10	250	CASE	58.4 x 58.4 x 48.3	BLACK
4030-20	76.20 x 50.80	225	CASE	58.4 x 58.4 x 48.3	BLACK
4030-30	76.20 x 76.20	190	CASE	58.4 x 58.4 x 48.3	BLACK
4040-10	101.60 x 25.40	250	CASE	58.4 x 58.4 x 48.3	BLACK
4040-15	101.60 x 38.10	180	CASE	58.4 x 58.4 x 48.3	BLACK
4040-20	101.60 x 50.80	180	CASE	58.4 x 58.4 x 48.3	BLACK
4040-30	101.60 x 76.20	150	CASE	58.4 x 58.4 x 48.3	BLACK
4050-15	127.00 x 38.10	140	CASE	58.4 x 58.4 x 48.3	BLACK
4050-20	127.00 x 50.80	100	CASE	58.4 x 58.4 x 48.3	BLACK
4050-30	127.00 x 76.20	90	CASE	58.4 x 58.4 x 48.3	BLACK
4060-15	152.40 x 38.10	100	CASE	58.4 x 58.4 x 48.3	BLACK
4060-20	152.40 x 50.80	100	CASE	58.4 x 58.4 x 48.3	BLACK
4060-30	152.40 x 76.20	90	CASE	58.4 x 58.4 x 48.3	BLACK
4080-20	203.20 x 50.80	65	CASE	58.4 x 58.4 x 48.3	BLACK
4080-30	203.20 x 76.20	60	CASE	58.4 x 58.4 x 48.3	BLACK



SPECIFICATIONS

PRODUCT NUMBER	EA SIZE (mm)	CASE QUANTITY	UNIT OF MEASURE	CASE DIMENSIONS (cm)	COLOR
INTERMEDIATE SPACERS					
4120-15	50.80 x 38.10	500	CASE	58.4 x 58.4 x 48.3	BLACK
4120-20	50.80 x 50.80	325	CASE	58.4 x 58.4 x 48.3	BLACK
4120-30	50.80 x 76.20	275	CASE	58.4 x 58.4 x 48.3	BLACK
4130-15	76.20 x 38.10	250	CASE	58.4 x 58.4 x 48.3	BLACK
4130-20	76.20 x 50.80	225	CASE	58.4 x 58.4 x 48.3	BLACK
4130-30	76.20 x 76.20	160	CASE	58.4 x 58.4 x 48.3	BLACK
4140-10	101.60 x 25.40	250	CASE	58.4 x 58.4 x 48.3	BLACK
4140-15	101.60 x 38.10	180	CASE	58.4 x 58.4 x 48.3	BLACK
4140-20	101.60 x 50.80	160	CASE	58.4 x 58.4 x 48.3	BLACK
4140-30	101.60 x 76.20	125	CASE	58.4 x 58.4 x 48.3	BLACK
4150-15	127.00 x 38.10	140	CASE	58.4 x 58.4 x 48.3	BLACK
4150-20	127.00 x 50.80	100	CASE	58.4 x 58.4 x 48.3	BLACK
4150-30	127.00 x 76.20	90	CASE	58.4 x 58.4 x 48.3	BLACK
4160-15	152.40 x 38.10	100	CASE	58.4 x 58.4 x 48.3	BLACK
4160-20	152.40 x 50.80	100	CASE	58.4 x 58.4 x 48.3	BLACK
4160-30	152.40 x 76.20	75	CASE	58.4 x 58.4 x 48.3	BLACK
4180-20	203.20 x 50.80	70	CASE	58.4 x 58.4 x 48.3	BLACK
4180-30	203.20 x 76.20	45	CASE	58.4 x 58.4 x 48.3	BLACK

For more technical information and/or to download the Tech Sheet for these products, please visit the Product Webpage: <https://calam.net/electrical-broadband/duct-spacers/>

ABOUT CAL AM MANUFACTURING

Cal Am Manufacturing® specializes in products for use in underground electrical and broadband applications. Founded in Southern California over thirty-five (35) years ago, Cal Am designs and produces fittings and sealing devices to serve utilities, municipalities, government facilities, datacenters, and fiber optic projects, through a worldwide network of distributors.

TEST OUR PRODUCT

Learn more at: <https://calam.net/test-our-products>

Corporate Office:
El Cajon, CA 92020

Phone +1.619.336.9550
Fax +1.619.336.9549

sales@calam.net
marketing@calam.net
accounting@calam.net

www.CalAm.net