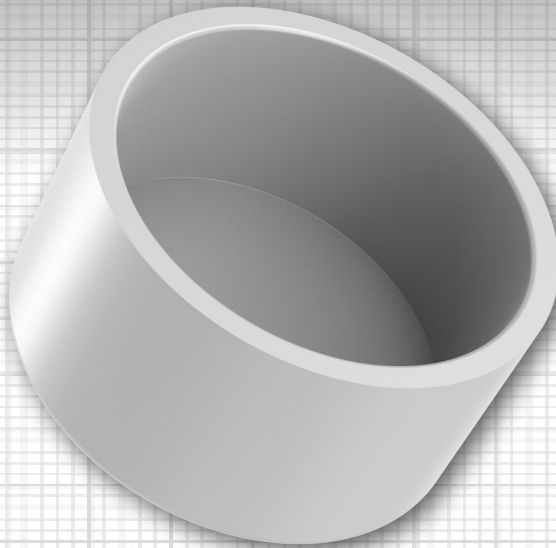


## KEY FEATURES

- Fits Schedule 40 & 80 and EB and DB conduits
- Available in eleven (11) sizes
- Installs in seconds, no tools required
- Warp resistant, durable design
- For encased and direct burial applications



PVC End Cap



PVC Riser Cap

### Available in two styles, PVC End Caps and Riser Caps are perfect for securing conduit openings

Our line of conduit end caps, available in sizes ranging from 0.50" - 6.00" | 15mm - 150mm, are manufactured in accordance to industry standards. The injection molding process creates a consistent, repeatable fit for easy installation.

Also manufactured in a Riser Cap design, this variation comes with a convenient rope-tie loop secured to the underside of the cap. This rope-tie feature makes mule tape or other line easy to tie-off and readily at-hand for future use.

Produced from high-impact Polyvinyl Chloride (PVC) using state-of-the-art manufacturing techniques, you will find that these products offer excellent lot-to-lot consistency, smooth walls, and a durable, warp-resistant design for simple installation.

## SPECIFICATIONS

PRODUCT NUMBER	EACH SIZE (IN)	EACH SIZE (mm)	CASE WEIGHT (IN)	CASE WEIGHT (cm)	CASE QUANTITY	UNIT OF MEASURE
<b>PVC RISER CAPS</b>						
2042-015	1.50	40	7.0 x 11.0 x 15.0	17.8 x 27.9 x 38.1	80	CASE
2042-020	2.00	50	7.0 x 11.0 x 15.0	17.8 x 27.9 x 38.1	100	CASE
2042-025	2.50	65	11.0 x 11.0 x 13.0	27.9 x 27.9 x 33.0	60	CASE
2042-030	3.00	80	13.0 x 13.0 x 17.0	33.0 x 33.0 x 43.2	60	CASE
2042-040	4.00	100	13.0 x 13.0 x 17.0	33.0 x 33.0 x 43.2	30	CASE
2042-050	5.00	125	13.0 x 13.0 x 17.0	33.0 x 33.0 x 43.2	15	CASE
2042-060	6.00	150	13.0 x 13.0 x 19.0	33.0 x 33.0 x 48.3	10	CASE
<b>PVC END CAPS</b>						
2046-005	0.50	15	5.0 x 9.0 x 11.0	12.7 x 22.9 x 27.9	100	CASE
2046-007	0.75	20	5.0 x 9.0 x 11.0	12.7 x 22.9 x 27.9	100	CASE
2046-010	1.00	25	5.0 x 9.0 x 13.0	12.7 x 22.9 x 33.0	100	CASE
2046-012	1.25	32	6.0 x 10.0 x 14.0	15.3 x 25.4 x 35.6	100	CASE
2046-015	1.50	40	7.0 x 11.0 x 15.0	17.8 x 27.9 x 38.1	100	CASE
2046-020	2.00	50	11.0 x 11.0 x 13.0	27.9 x 27.9 x 33.0	100	CASE
2046-025	2.50	65	9.0 x 13.0 x 17.0	22.9 x 33.0 x 43.2	60	CASE
2046-030	3.00	80	13.0 x 13.0 x 17.0	33.0 x 33.0 x 43.2	60	CASE
2046-040	4.00	100	13.0 x 13.0 x 17.0	33.0 x 33.0 x 43.2	30	CASE
2046-050	5.00	125	13.0 x 13.0 x 17.0	33.0 x 33.0 x 43.2	15	CASE
2046-060	6.00	150	13.0 x 13.0 x 19.0	33.0 x 33.0 x 48.3	10	CASE

For more technical information and/or to download the Tech Sheet for these products, please visit the Product Webpage: <https://calam.net/electrical-broadband/pvc-caps/>

### ABOUT CAL AM MANUFACTURING

Cal Am Manufacturing® specializes in products for use in underground electrical and broadband applications. Founded in Southern California over 35 years ago, Cal Am designs and produces fittings and sealing devices to serve utilities, municipalities, government facilities, data centers, and fiber optic projects, through a worldwide network of distributors.

### TEST OUR PRODUCT

Learn more at: <https://calam.net/test-our-products>

Corporate Office:  
El Cajon, CA 92020

Phone +1.619.336.9550  
Fax +1.619.336.9549

[sales@calam.net](mailto:sales@calam.net)  
[marketing@calam.net](mailto:marketing@calam.net)  
[accounting@calam.net](mailto:accounting@calam.net)

[www.CalAm.net](http://www.CalAm.net)