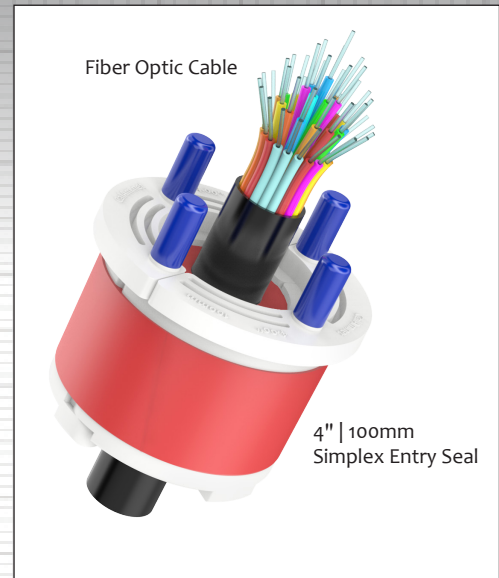
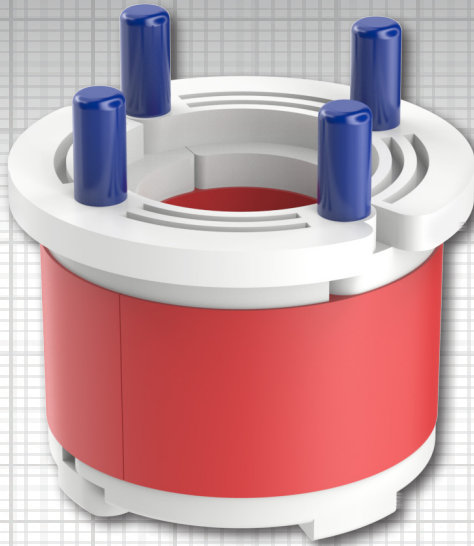


## KEY FEATURES

- Water, air and corrosion resistant
- Can be easily installed with retrofit
- Excellent cable support and organization
- Made from recyclable materials
- Ideal for datacenters, telecom or electrical manholes
- Easy and fast to install
- Long lasting materials
- Professional and clean sealing method
- Fast lead times from California and Tennessee



## Part of the Cal Am System, a fully comprehensive datacenter solution for sealing conduit, microduct and innerduct, and fiber optic cable

Whether a blank seal is needed, or multiple ports for passing through fiber or innerduct, the Cal Am System is the answer. The Wedge Seal Entry Seals are ideal for datacenters, telecom, and electrical manholes. Utilizing a split design, these seals can be installed almost anywhere along a cable network making them easy to install for retrofits.

Manufactured from a combination of polyvinyl chloride (PVC) and thermoplastic elastomer components, these materials will last long and are very cost-effective. These seals use stainless steel fasteners and can be installed with widely available hand-tools. In addition, these Entry Seals prevent the incursion of water and sedimentation into costly duct banks, raceway systems, and fiber networks while confining potential problems like dangerous vapors to their source. This seal provides a clean-install compared to customers using messy sealing foams or unreliable methods of sealing conduit.

The Entry Seal is available in three configurations: single port (Simplex), three-port (Triplex), and four-port (Quadplex). Our newest Entry Seal is designed specifically for smaller innerduct and fiber optic cable in a single port 2" | 50mm.

Many of our sizes are JackMoon® cross-referenced for a seamless part number conversion.

# FEATURES

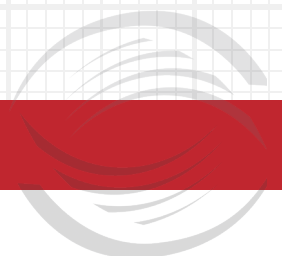
**Thermoplastic Elastomer Seal:** The thermoplastic elastomer gasket is designed to expand to create a strong seal. The tight seal makes it air, water and corrosion resistant to protect the investment. In addition, this material is long lasting making it cost effective for any project.

**Split Design:** The split design of the plug is retrofit installable, meaning there is always time to install it after a project is completed, to protect the investment. In addition, the finished installation is professional and clean compared to foam seal or airbags.

**Polyvinyl Chloride (PVC) Top and Bottom Plates:** This material is corrosion and abrasion resistant. This material is long-lasting against damaging elements and is a more cost-effective solution.

## SPECIFICATIONS

PRODUCT NUMBER	CASE SIZE	UNIT OF MEASURE	CASE QUANTITY	CONDUIT INNER DIAMETER	PORT DIAMETER RANGE	CASE DIMENSIONS	CASE WEIGHT
7140-100	4" 100mm	CASE	4	3.92 - 4.39" 99.60 - 111.50mm	0.70 - 1.02" 17.80 - 25.90mm	10 x 10 x 5" 25.40 x 25.40 x 12.70mm	4lbs 1.81kg
7140-115	4" 100mm	CASE	4	3.92 - 4.39" 99.60 - 111.50mm	1.03 - 1.17" 26.20 - 29.70mm	10 x 10 x 5" 25.40 x 25.40 x 12.70mm	4lbs 1.81kg
7140-135	4" 100mm	CASE	4	3.92 - 4.39" 99.60 - 111.50mm	1.18 - 1.37" 30.00 - 34.80mm	10 x 10 x 5" 25.40 x 25.40 x 12.70mm	4lbs 1.81kg
7140-195	4" 100mm	CASE	4	3.92 - 4.39" 99.60 - 111.50mm	1.38 - 1.96" 35.10 - 49.80mm	10 x 10 x 5" 25.40 x 25.40 x 12.70mm	4lbs 1.81kg
7140-225	4" 100mm	CASE	4	3.92 - 4.18" 99.60 - 106.20mm	1.92 - 2.25" 48.80 - 57.20mm	10 x 10 x 5" 25.40 x 25.40 x 12.70mm	4lbs 1.81kg
7140-250	4" 100mm	CASE	4	3.92 - 4.18" 99.60 - 106.20mm	2.25 - 2.56" 57.20 - 65.00mm	10 x 10 x 5" 25.40 x 25.40 x 12.70mm	4lbs 1.81kg
7140-290	4" 100mm	CASE	4	3.92 - 4.18" 99.60 - 106.20mm	2.53 - 2.92" 64.30 - 74.20mm	10 x 10 x 5" 25.40 x 25.40 x 12.70mm	4lbs 1.81kg



## APPLICABLE CONDUIT

CONDUIT INNER DIAMETER	APPLICABLE 4"   100mm CONDUIT	PORT DIAMETER RANGE
3.92 - 4.39" 99.60 - 111.50mm	PVC SCH 40 PVC DB 120 PVC DB 100 PVC DB 60 PVC EB 35 PVC EB 20 EMT HDPE SCH 40	0.70 - 1.02" 17.80 - 25.90mm
3.92 - 4.39" 99.60 - 111.50mm		1.03 - 1.17" 26.20 - 29.70mm
3.92 - 4.39" 99.60 - 111.50mm		1.18 - 1.37" 30.00 - 34.80mm
3.92 - 4.39" 99.60 - 111.50mm		1.38 - 1.96" 35.10 - 49.80mm
3.92 - 4.18" 99.60 - 106.20mm	PVC SCH 40 PVC DB 120 HDPE SCH 40	1.92 - 2.25" 48.80 - 57.20mm
3.92 - 4.18" 99.60 - 106.20mm		2.25 - 2.56" 57.20 - 65.00mm
3.92 - 4.18" 99.60 - 106.20mm		2.53 - 2.92" 64.30 - 74.20mm

Applicable conduit types based on product's conduit ID range meeting or exceeding conduit ID dimensions specified in one or more of following standards: UL651, UL651A, ASTM F2160, NEMA TC 6 & 8

For more technical information and/or to download the Marketing Technical Sheet for CASE of these products, please visit the Entry Seal Product Webpage: <https://calam.net/electrical-broadband/wedge-seals/>

### ABOUT CAL AM MANUFACTURING

Cal Am Manufacturing® specializes in products for use in underground electrical and broadband applications. Founded in Southern California over thirty-five (35) years ago, Cal Am designs and produces fittings and sealing devices to serve utilities, municipalities, government facilities, datacenters, and fiber optic projects, through a worldwide network of distributors.

### TEST OUR PRODUCT

Learn more at: <https://calam.net/test-our-products>

Corporate Office:  
El Cajon, CA 92020

Phone +1.619.336.9550

Sales@CalAm.net  
Marketing@CalAm.net

[www.CalAm.net](http://www.CalAm.net)